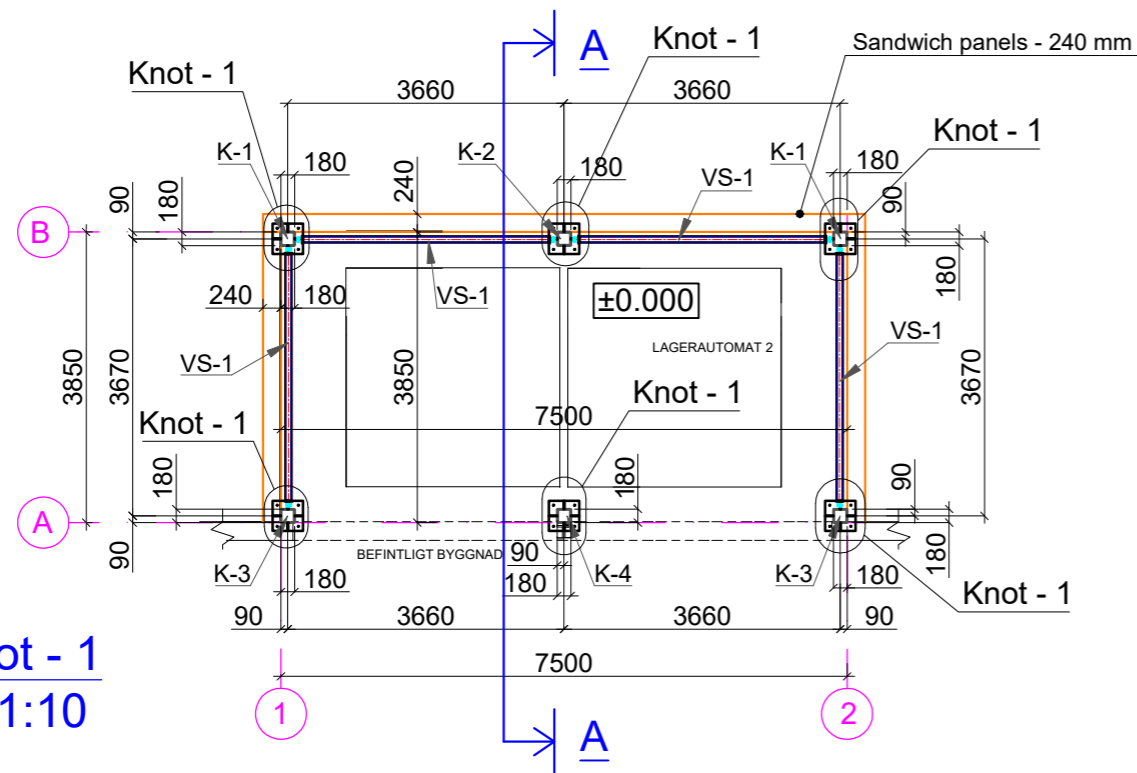
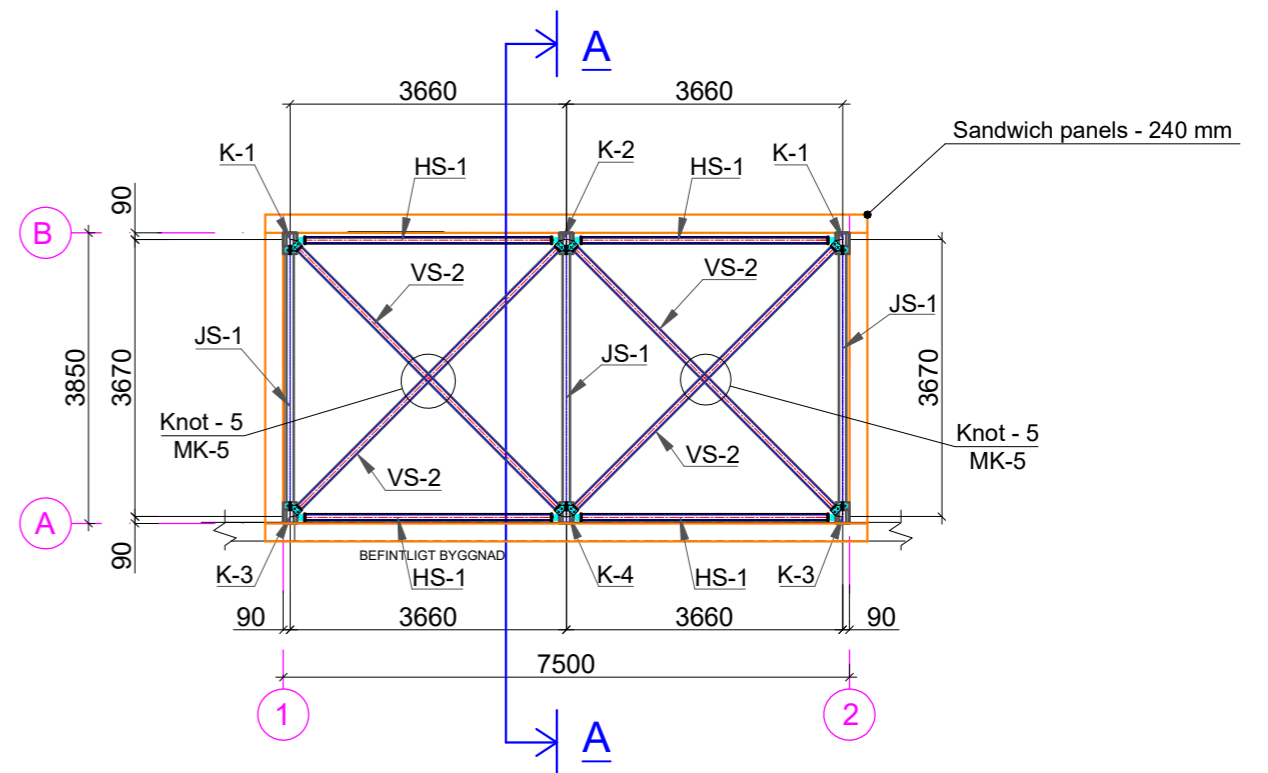


## COLUMNS PLAN M 1:100

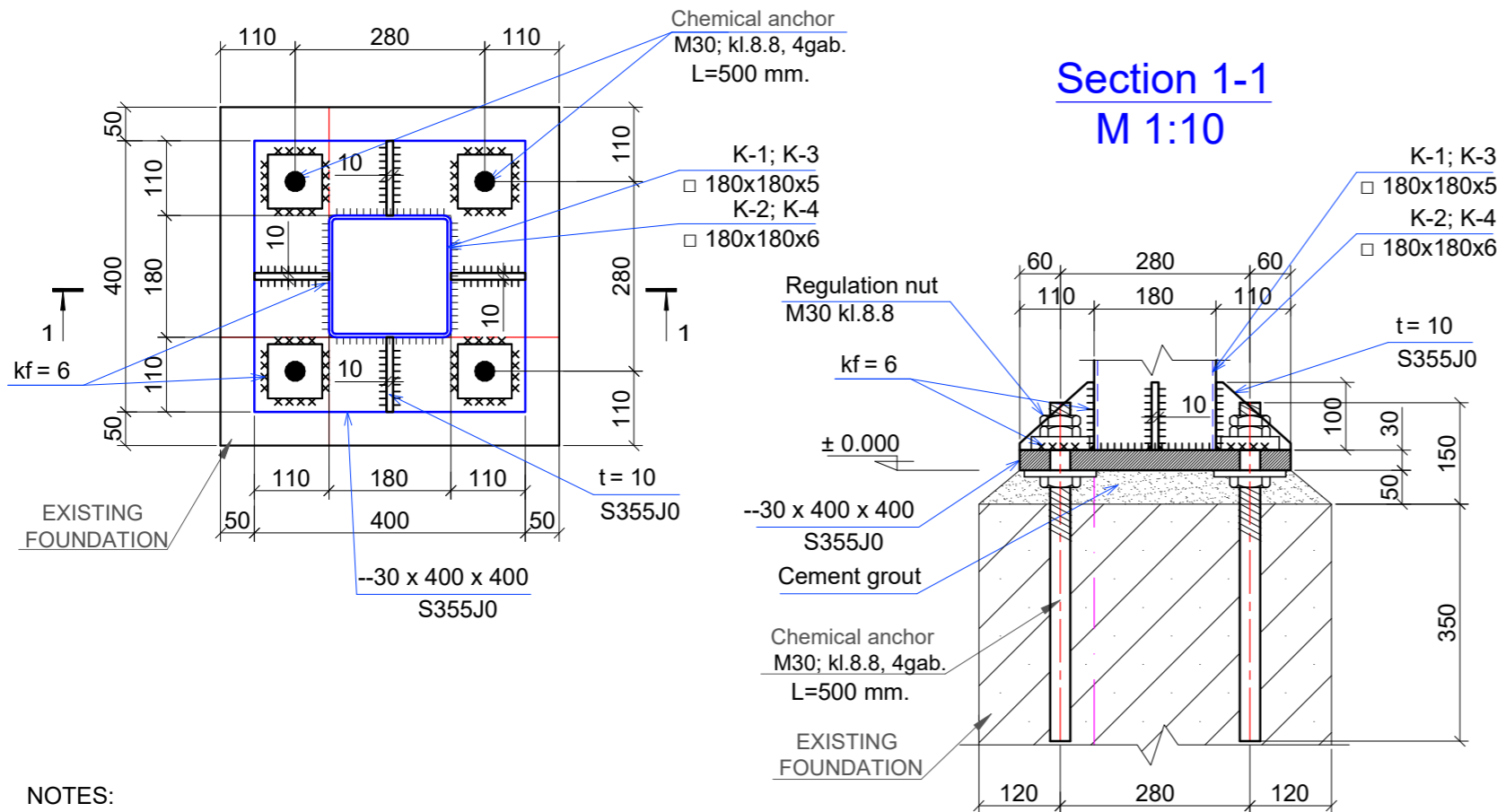


**Knot - 1**  
M 1:10

## ROOF BEAMS PLAN AND CONNECTIONS M 1:100



**Section 1-1**  
M 1:10



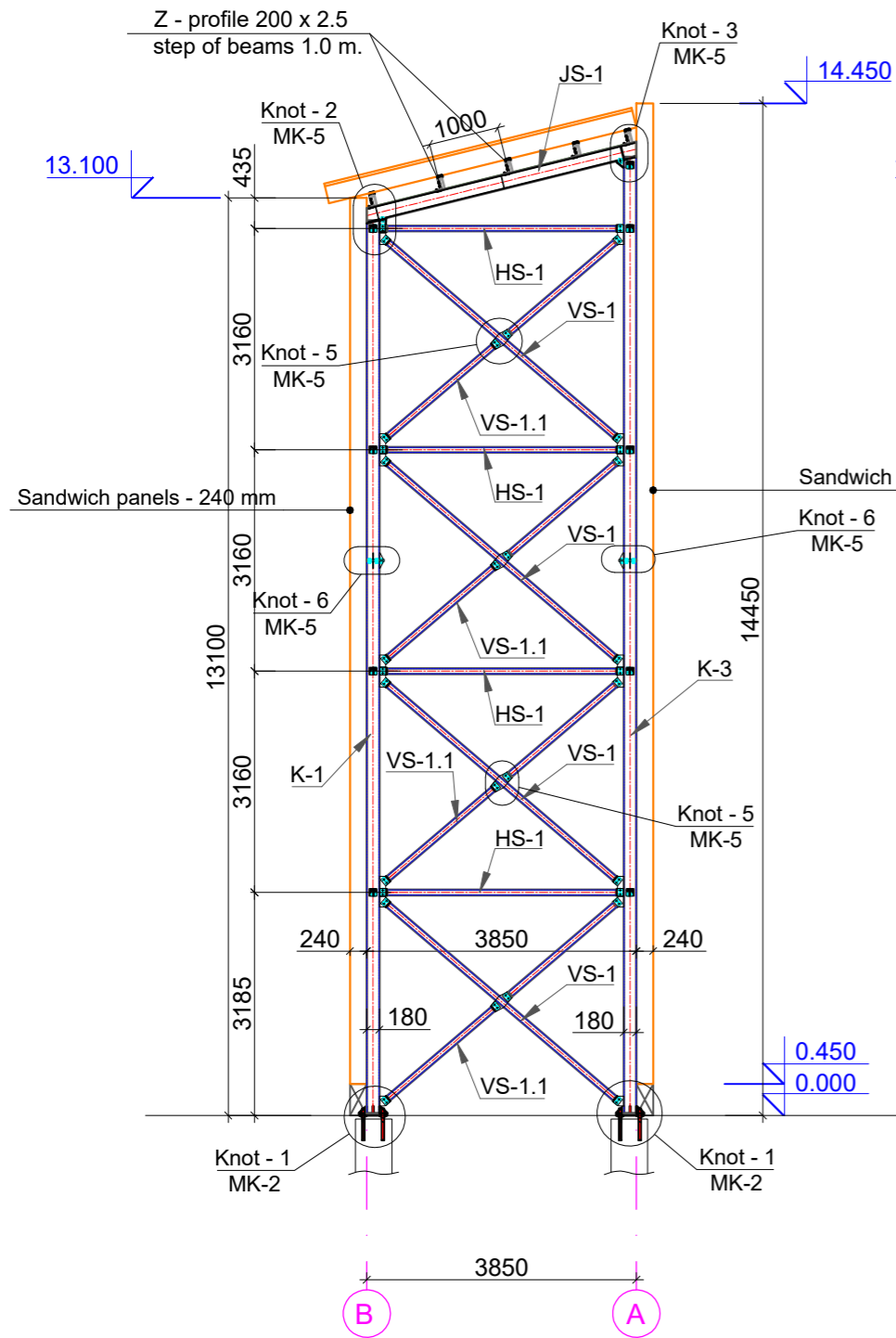
**NOTES:**

1. First storey's floor level is taken as as relative starting point and marked as 0.000m.
2. Dimensions are given in millimeters, elevation marks are given in meters.
3. The list of drawings and general instructions, see page MK-1.
4. All factory welds Kf=1.2t min, except as shown in the drawing, wire Ø 1.2 mm - WDI15SG, welding in CO2.
5. The specification did not evaluate the mass of scraps.
6. Volumes of steel to clarify the development of MKD.
7. The given page be read in conjunction with the page MK-5.

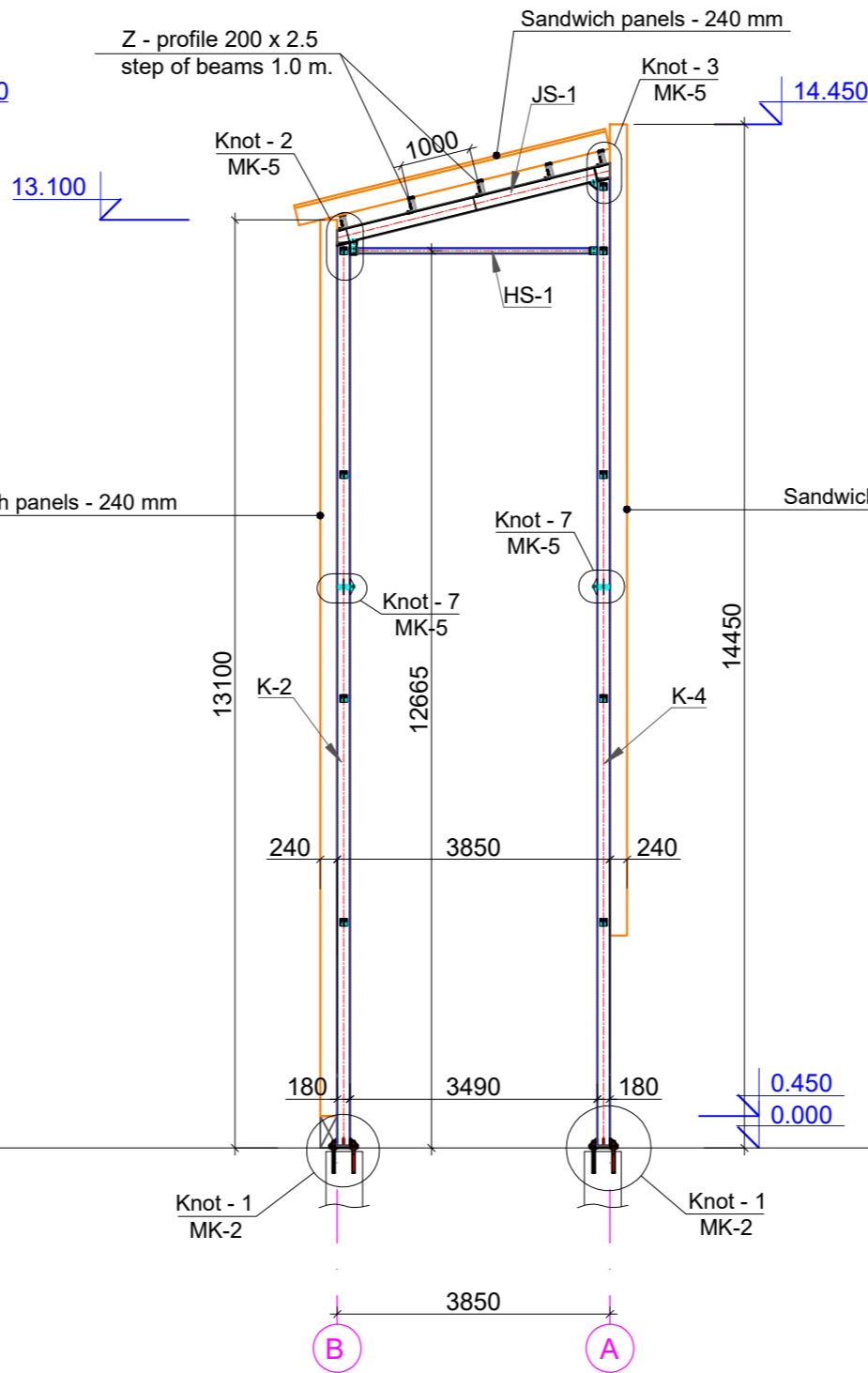
### MOUNTING SPECIFICATION

MARK.	STEEL MARKA	STEEL PROFILE	Weight kg/m	LENGTH mm	NUMBER pcs.	MASSES, kg		NOTE
						single	total	
<b>COLUMNS</b>								
K-1	S355JR	□ 180x180x5	27.00	12750	2	344.3	688.5	2273.5
K-2	S355JR	□ 180x180x6	32.10	12750	1	409.3	409.3	
K-3	S355JR	□ 180x180x5	27.00	13655	2	368.7	737.4	
K-4	S355JR	□ 180x180x6	32.10	13655	1	438.3	438.3	
<b>CONNECTIONS</b>								
VS-1	S355JR	□ 80x80x4	9.22	4250	16	39.2	627.0	2194.7
VS-1.1	S355JR	□ 80x80x4	9.22	1960	32	18.1	578.3	
VS-2	S355JR	□ 80x80x4	9.22	4825	4	44.5	177.9	
HS-1	S355JR	□ 80x80x4	9.22	3260	27	30.1	811.5	
<b>BEAMS</b>								
JS-1	S355JR	IPE 200	22.40	4020	3	90.0	270.1	270.144
<b>TOTAL ALL MARK:</b>							4738.3	
	S355J0	Plate			10%	473.8	5212.2	

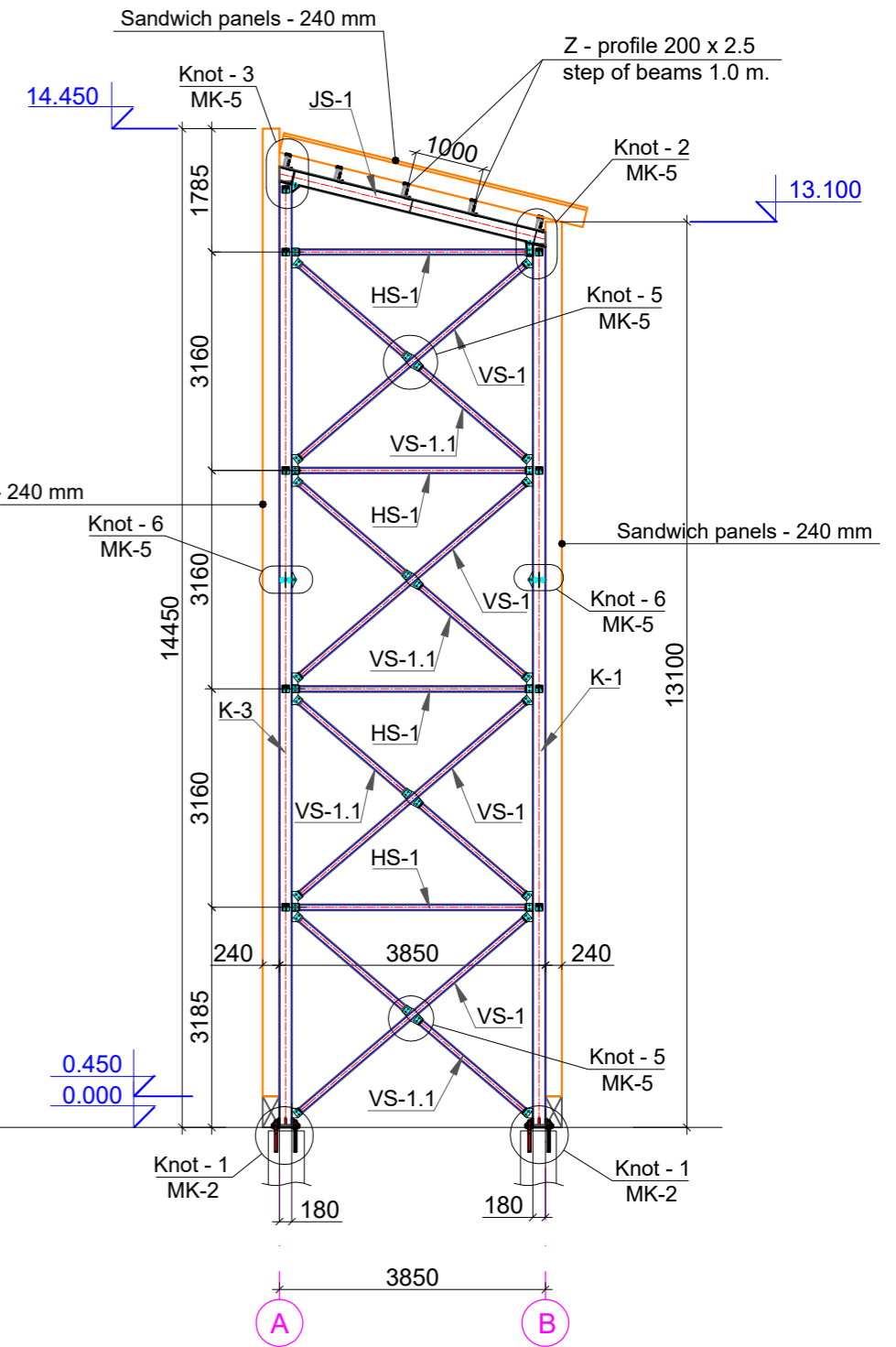
### Cross section along the "1" axis M 1:100



### Section A - A M 1:100



### Cross section along the "2" axis M 1:100

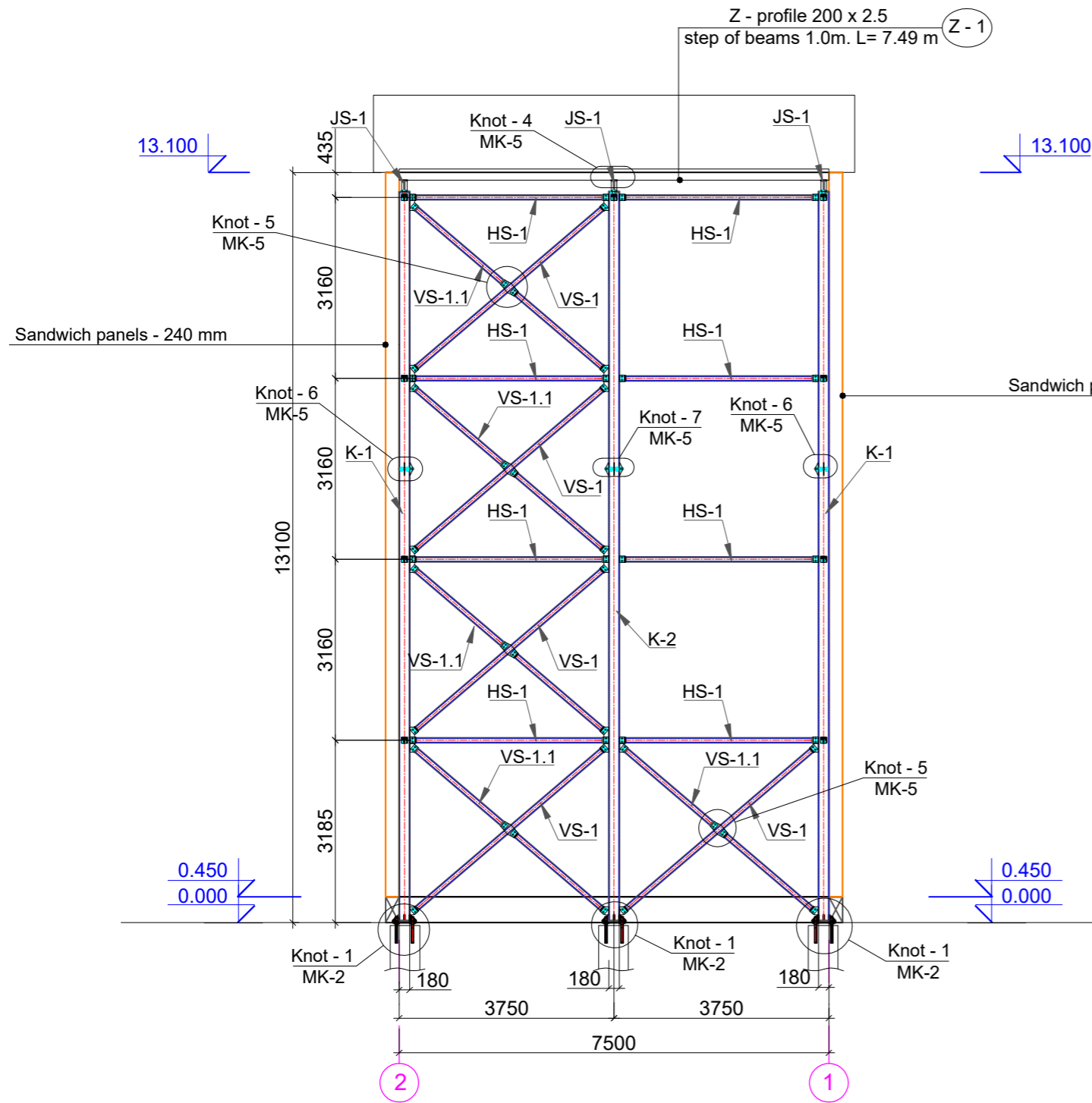


**NOTES:**

1. First storey's floor level is taken as as relative starting point and marked as 0.000m.
2. Dimensions are given in millimeters, elevation marks are given in meters.
3. The list of drawings and general instructions, see page MK-1.
4. All factory welds Kf=1.2t min, except as shown in the drawing, wire Ø 1.2 mm - WDI15SG, welding in CO2.
5. The specification did not evaluate the mass of scraps.
6. Volumes of steel to clarify the development of MKD.
7. The given page be read in conjunction with the page MK-2; - 5.

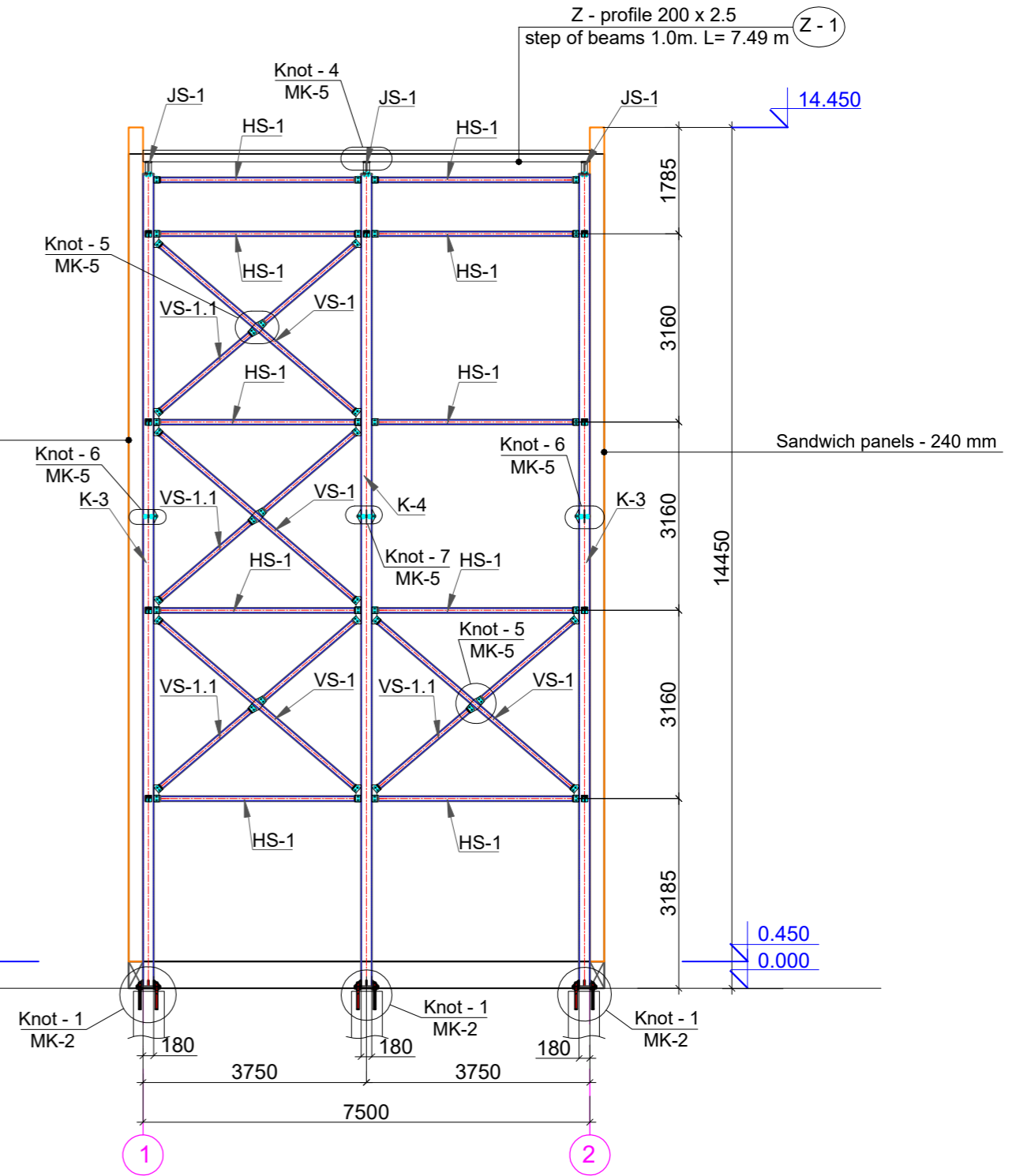
# Cross section along the "B" axis

M 1:100



# Cross section along the "A" axis

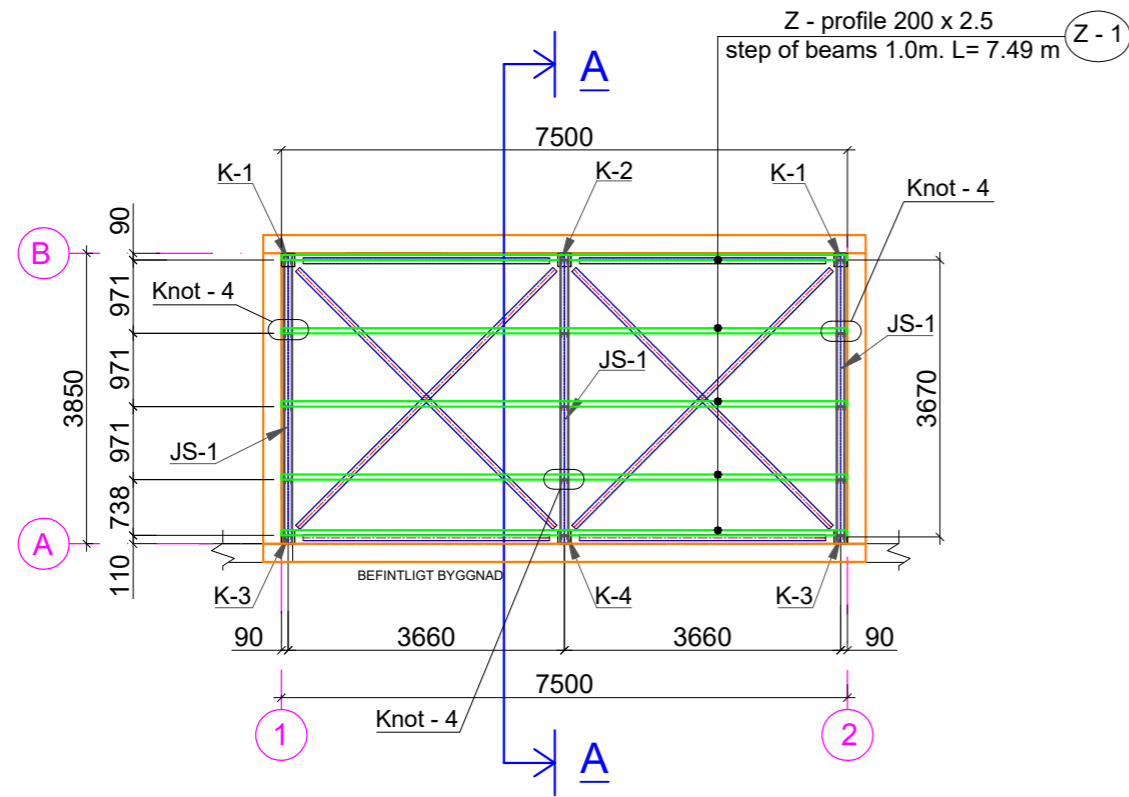
M 1:100



**NOTES:**

1. First storey's floor level is taken as as relative starting point and marked as 0.000m.
2. Dimensions are given in millimeters, elevation marks are given in meters.
3. The list of drawings and general instructions, see page MK-1.
4. All factory welds Kf=1.2t min, except as shown in the drawing, wire Ø 1.2 mm - WDI15SG, welding in CO2.
5. The specification did not evaluate the mass of scraps.
6. Volumes of steel to clarify the development of MKD.
7. The given page be read in conjunction with the page MK-2; -5.

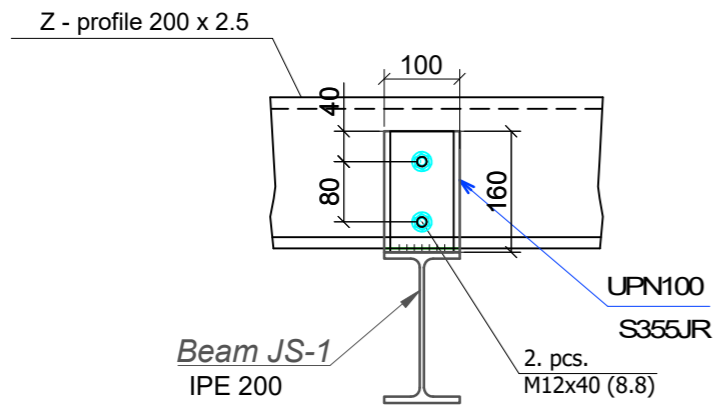
# Z PROFILE PLAN M 1:100



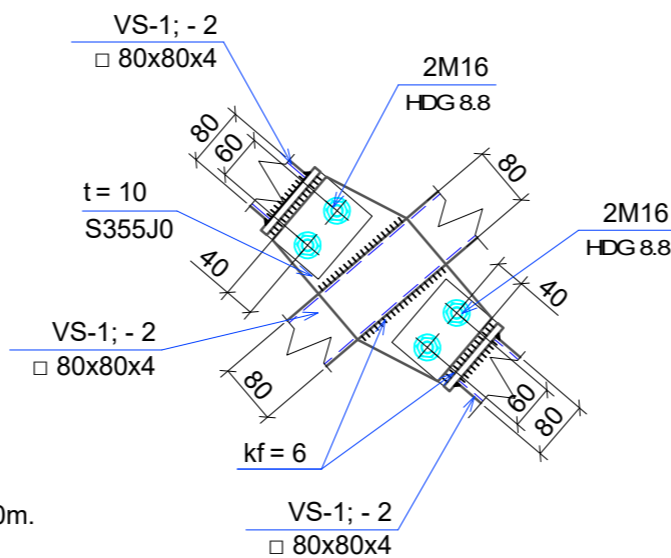
## SPECIFICATION OF "Z" PROFILE ELEMENTS

MARK.	STEEL MARKA	STEEL PROFILE	Weight kg/m	LENGTH mm	NUMBER pcs.	MASSES, kg		NOTE	
						single	total		
BEAMS									
Z-1	S350GD	Z - PROFILE 200 x 2.5	6.87	7490	5	51.5	257.3	257.3	
TOTAL ALL MARK:								257.28	

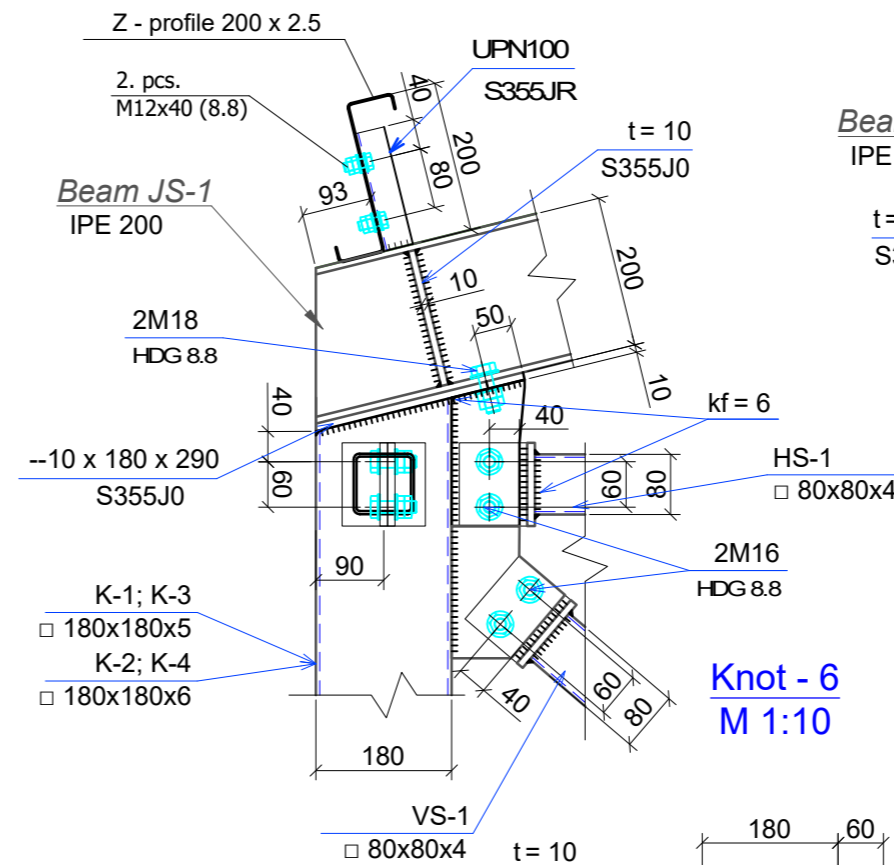
### Z - Profile Connection Knot - 4 M 1:10



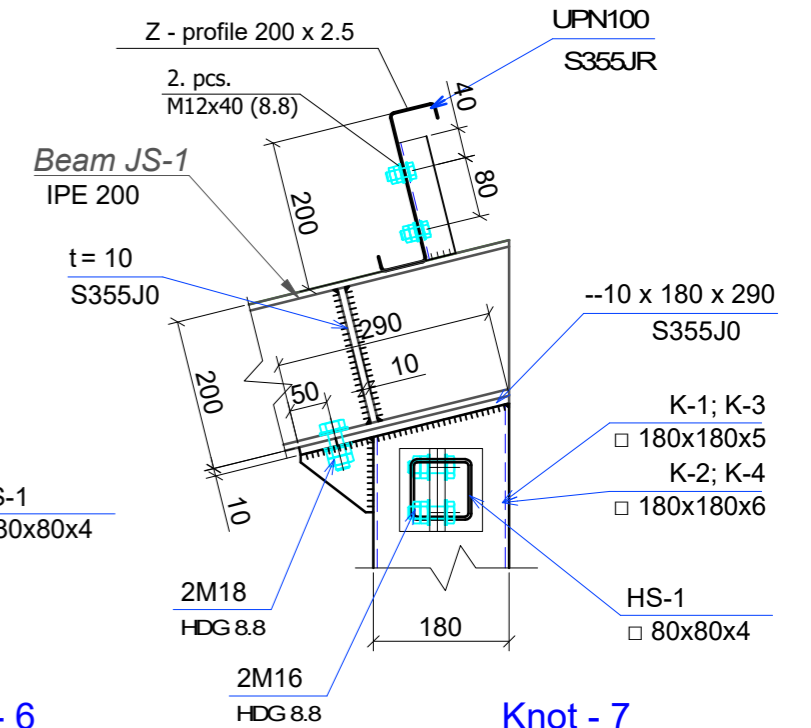
### Knot - 5 M 1:10



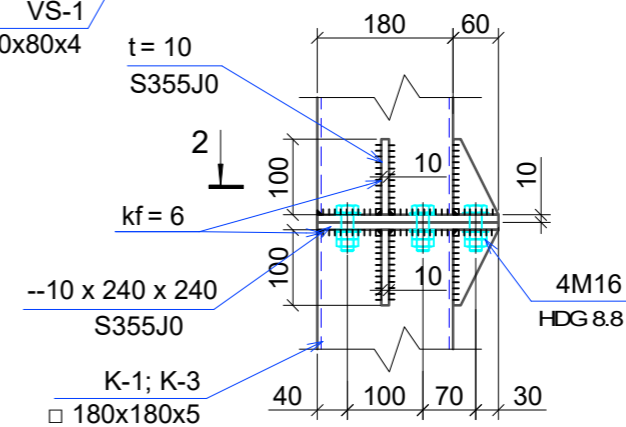
### Knot - 2 M 1:10



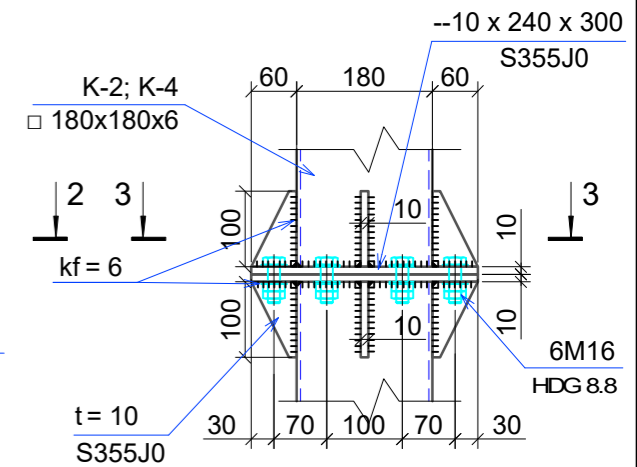
### Knot - 3 M 1:10



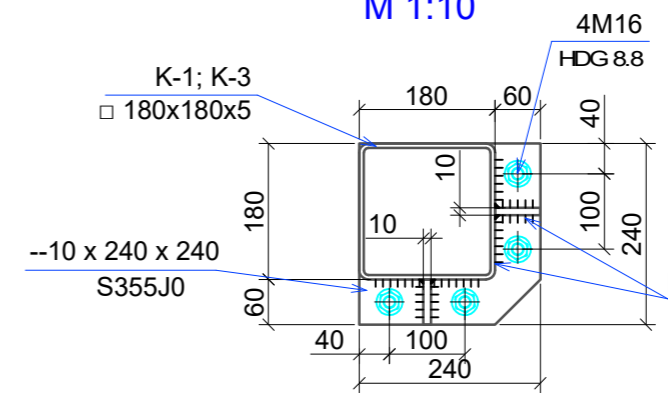
### Knot - 6 M 1:10



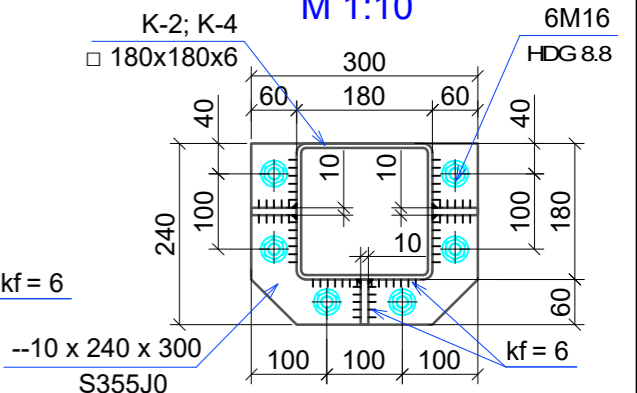
### Knot - 7 M 1:10



### Section 2-2 M 1:10



### Section 3-3 M 1:10



#### NOTES:

1. First storey's floor level is taken as as relative starting point and marked as 0.000m.
2. Dimensions are given in millimeters, elevation marks are given in meters.
3. The list of drawings and general instructions, see page MK-1.
4. All factory welds Kf=1.2t min, except as shown in the drawing, wire Ø 1.2 mm - WDI15SG, welding in CO2.
5. The specification did not evaluate the mass of scraps.
6. Volumes of steel to clarify the development of MKD.
7. The given page be read in conjunction with the page MK-2.