



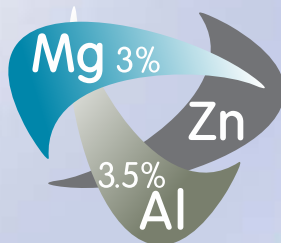
DURABLE COATING FOR SOLAR STRUCTURES.

Our structures for photovoltaic farms are manufactured from the best steel with metallic Magnelis® coating – the very best in terms of anti-corrosion protection.

Basic advantages:

- Corrosion resistance: three times higher than that of zinc-coated steel*
- Self-healing properties ensuring effective edge protection
- Cost-effectiveness in comparison to batch-galvanised steel

* Data based on exposure test results



ATTENTION: The flyer does not constitute an offer within the meaning of commercial law and is only a sample presentation with the description of the products of the Budimex company. The colors presented in this catalog may differ from the real colors of the products.

We make every effort to ensure that the presented publication contains up-to-date information on the date of printing. Due to continuous product development, our offerings may vary in individual markets. Product availability should always be confirmed with the Sales Department.



Would you like to find out more? Scan QR code.



SUPPORT STRUCTURES FOR PHOTOVOLTAIC PANELS

AUTHORISED DISTRIBUTOR

S panel

S Panel

sell@s-panel.eu
www.s-panel.lv



FWD1 HDM

Layout: Horizontal
 Structure: Two-support, driven into the ground
 Module size: 2008-2205 x 996-1054 x 35
 Module type: monofacial
 Layout of modules: 3x3, 3x4, 3x5, 4x3, 4x4, 4x5

Wind zone: 1
 Snow zone: 1,2,3
 Location: Up to 300 AMSL
 Tilt angle: 25°



FWD2 HDM

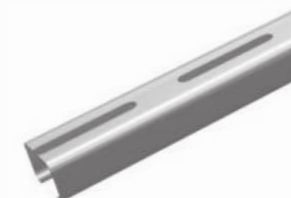
Layout: Vertical
 Structure: Two-support, driven into the ground
 Module size: 2008-2205 x 996-1054 x 35
 Module type: monofacial
 Layout of modules: 2x4, 2x5, 2x6, 2x7

Wind zone: 1
 Snow zone: 1,2,3
 Location: Up to 300 AMSL
 Tilt angle: 25°



Trapezoidal steel bridge

Height (mm): 100
 Dimensions (mm): 250, 340, 420
 Orientation: Vertical
 Module size: any
 Material: S320GD steel
 + ZM310 Magnelis



Roof profile

Installation method: Perpendicular to the long side of the module
 Dimensions (mm): 2250, 5435
 Orientation: any
 Module size: any
 Material: S320GD steel + ZM310 Magnelis



FWD1 HMM

Layout: Horizontal
 Structure: Two-support, driven into the ground
 Module size: 1640-1776 x 990-1054 x 35
 Module type: monofacial
 Layout of modules: 3x3, 3x4, 3x5, 4x3, 4x4, 4x5

Wind zone: 1
 Snow zone: 1,2,3
 Location: Up to 300 AMSL
 Tilt angle: 30°



FWD2 HMM

Layout: Vertical
 Structure: Two-support, driven into the ground
 Module size: 1640-1776 x 990-1054 x 35
 Module type: monofacial
 Layout of modules: 2x4, 2x5, 2x6, 2x7

Wind zone: 1
 Snow zone: 1,2,3
 Location: Up to 300 AMSL
 Tilt angle: 30°



FWD1 HBM

Layout: Horizontal
 Structure: Two-support, driven into the ground
 Module size: 2250-2300 x 1130-1140 x 35
 Module type: bifacial, monofacial
 Layout of modules: 3x2, 3x1

Wind zone: 1
 Snow zone: 1,2,3
 Location: Up to 300 AMSL
 Tilt angle: 25°



FWD2 HBM

Layout: Vertical
 Structure: Two-support, driven into the ground
 Module size: 1720-2300 x 1095-1140 x 30/35/40
 Module type: monofacial

Layout of modules: 2x4, 2x5, 2x6, 2x7

Wind zone: 1
 Snow zone: 1,2,3
 Location: Up to 300 AMSL
 Tilt angle: 25°



Carports

The market-unique support structure for Carport PV modules is designed to make it as user-friendly as possible. Entering and leaving even small plots, driveways and parking lots, or unpacking the car after shopping or removing young children from the car will not be problematic any longer. The spacing between the pillars makes opening the doors or the trunk lid comfortable and unobstructed, without the risk of damaging them. Aesthetic appearance, a variety of functionalities and positive impact on the environment only.